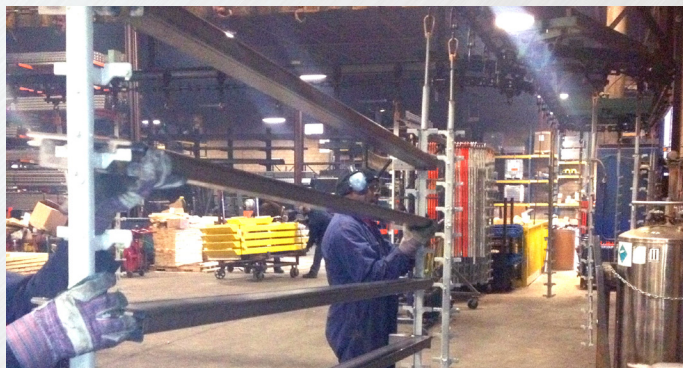


# SPACE MANUFACTURING

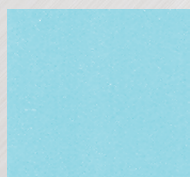
## POWDER COATING SPECIFICATIONS

Space Aid Manufacturing's custom powder coating system is able to accommodate parts 48" wide, 72" high and 35' long. A five stage environmentally friendly iron phosphate wash and rinse pre-treatment cycle insures all components are thoroughly cleaned prior to coating guaranteeing superior corrosion resistance between the product and our TGIC free baked on polyester powder coat finish. Typical paint coverage will be 2 mils – 3 mils providing a more durable and even finish with improved hardness, exterior stability and chemical resistance.

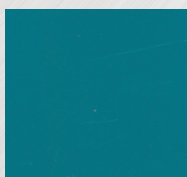
Premium and custom colours along with powders that meet FDA approval are also available for an appropriate fee.



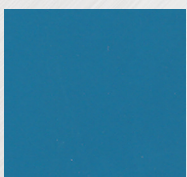
## OUR STANDARD AND PREMIUM COLOURS ARE:



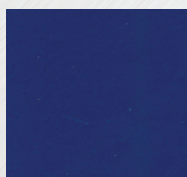
Space Aid  
Light Blue



Space Aid  
Medium Blue



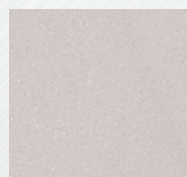
Space Aid  
Dark Blue



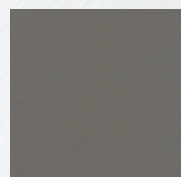
Space Aid  
Royal Blue



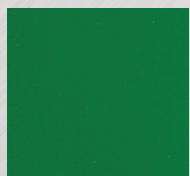
Space Aid  
Orange



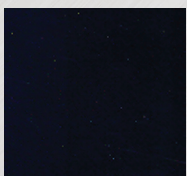
Space Aid  
Light Gray



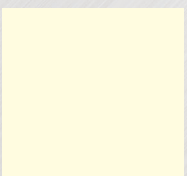
Space Aid  
Dark Gray



Space Aid  
Dark Green



Space Aid  
Medium Black



Space Aid  
Off White

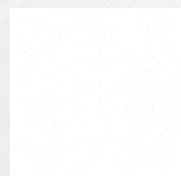
### SPACE AID PREMIUM COLOURS



Space Aid  
Barn Red



Space Aid  
Safety Yellow



Space Aid  
Sky White

# POWDER COATING SPECIFICATIONS

call now, or visit [www.spaceaidmfg.com](http://www.spaceaidmfg.com) for more information

43 Regan Road, Brampton, Ontario

Tel: (905) 840-5550 | Fax: (905) 840-5560

Copyright © 2012 Space Aid Manufacturing/M & P Tool Products Inc.